



Pivotante

68/78/92mm





Pivotante horizontal

Pivotante horizontal:
› 175kg

Marco: esp.:
› 68/78/92mm

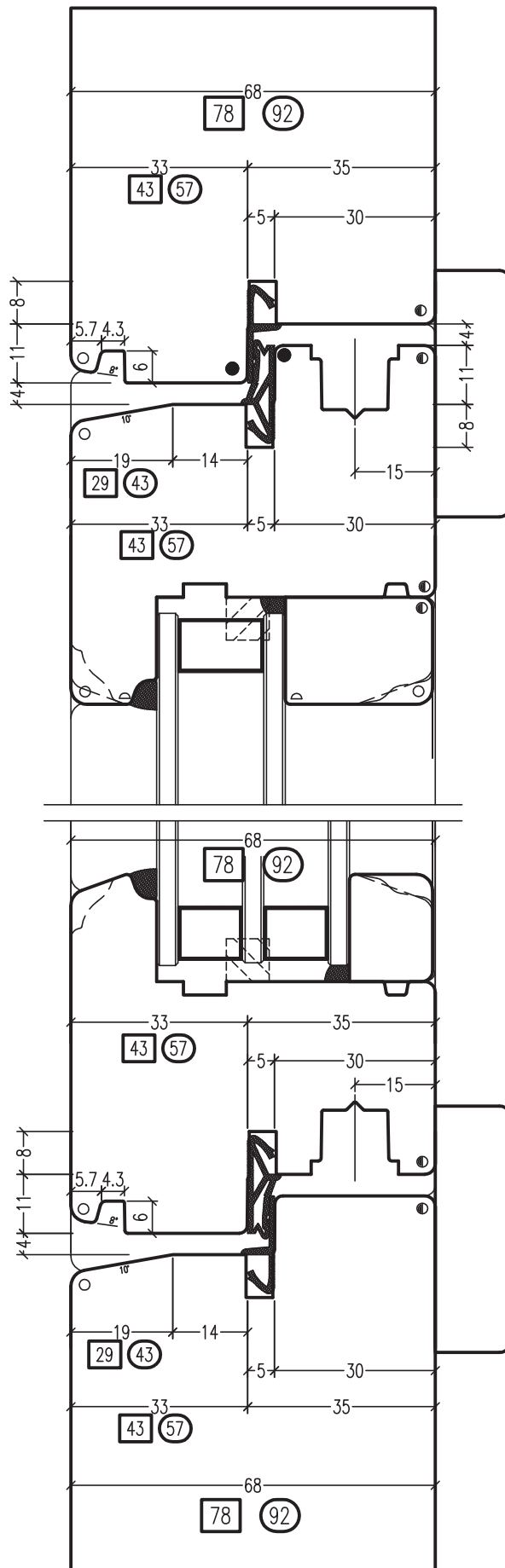
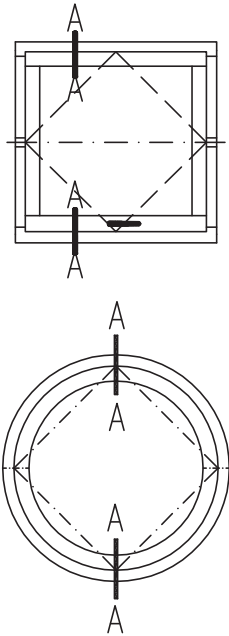
Sistema MAICO

L 161509030

KBZ: SW68
SW88
SW92



Pivotante horizontal 175kg
Marco: esp.: 68/78/92mm
Sistema Maico



- ∅ R 1.0
- R 1.5
- R 2.0
- R 3.0

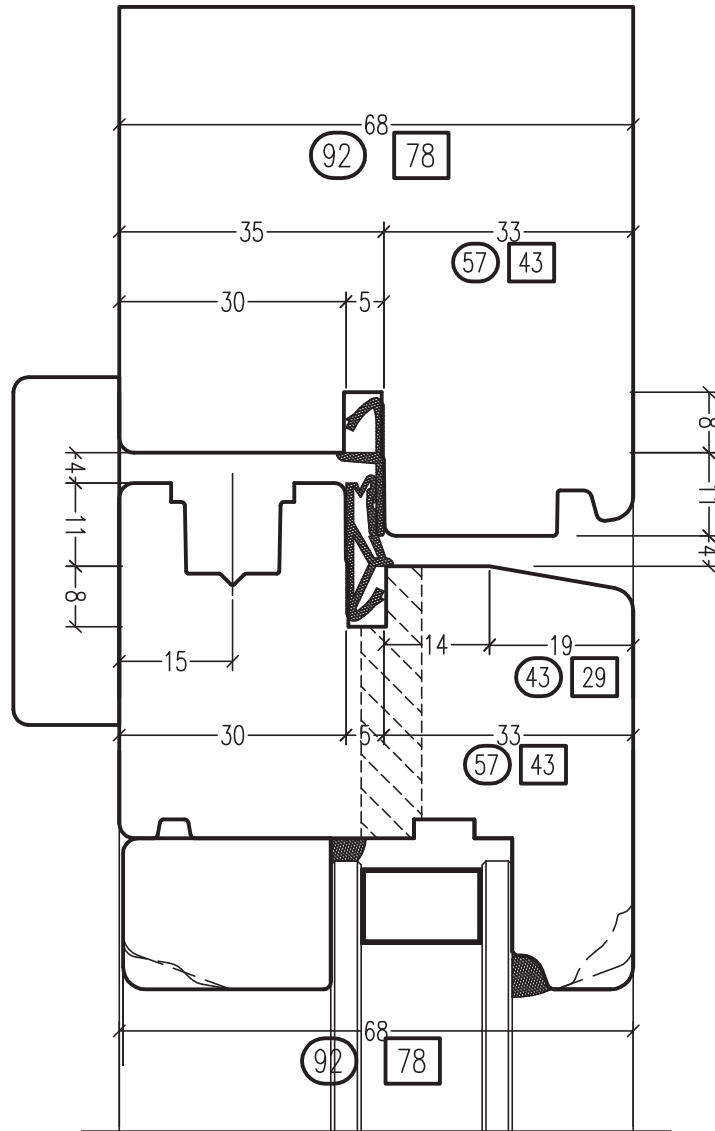
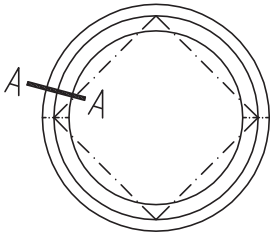
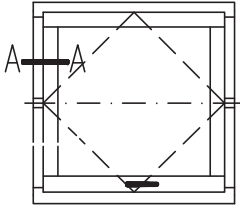
Pivotante horizontal

L 161509030 PZ01

KBZ: SW68
SW78
SW92



Pivotante horizontal 175kg
Marco: esp.: 68/78/92mm
Sistema Maico



- ⊖ R 1.0
- R 1.5
- R 2.0
- R 3.0

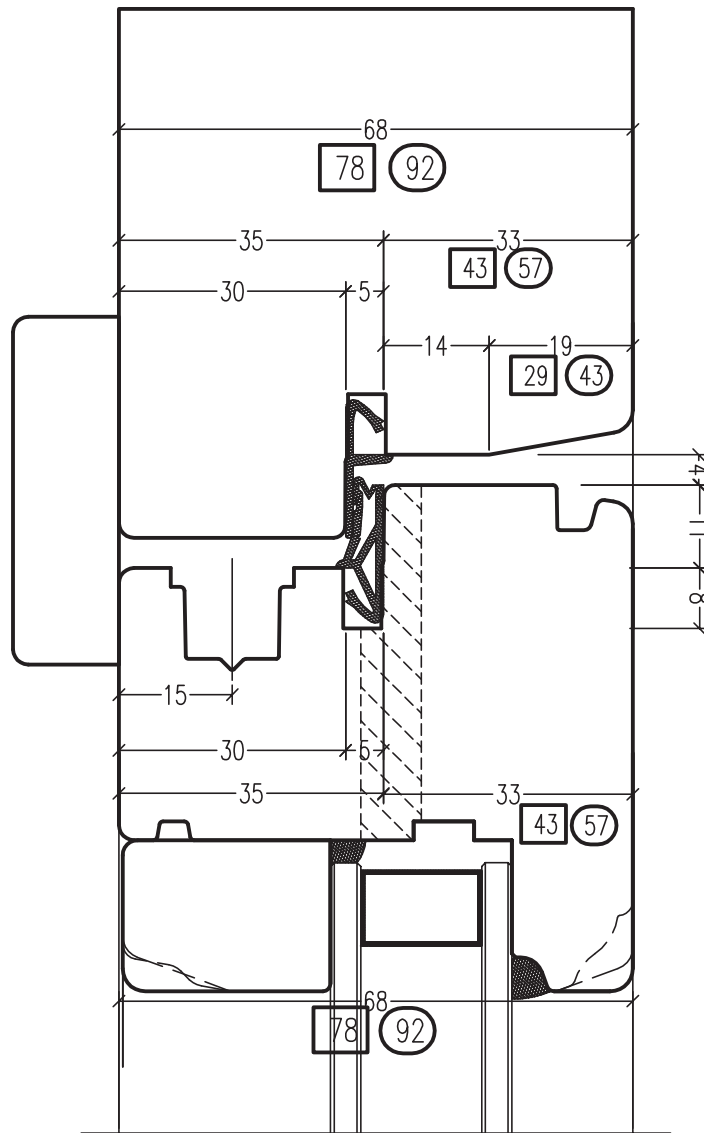
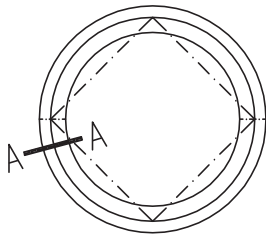
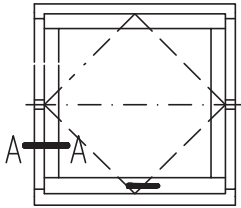
Pivotante horizontal

L 161509030 PZ02

KBZ: SW68
 SW78
 SW92



Pivotante horizontal 175kg
 Marco: esp.: 68/78/92mm
 Sistema Maico



- ⊖ R 1.0
- R 1.5
- R 2.0
- R 3.0

Pivotante horizontal

L 161509030 PZ03



Pivotante vertical

Pivotante horizontal:
> 175kg

Marco: esp.:
> 68/78/92mm

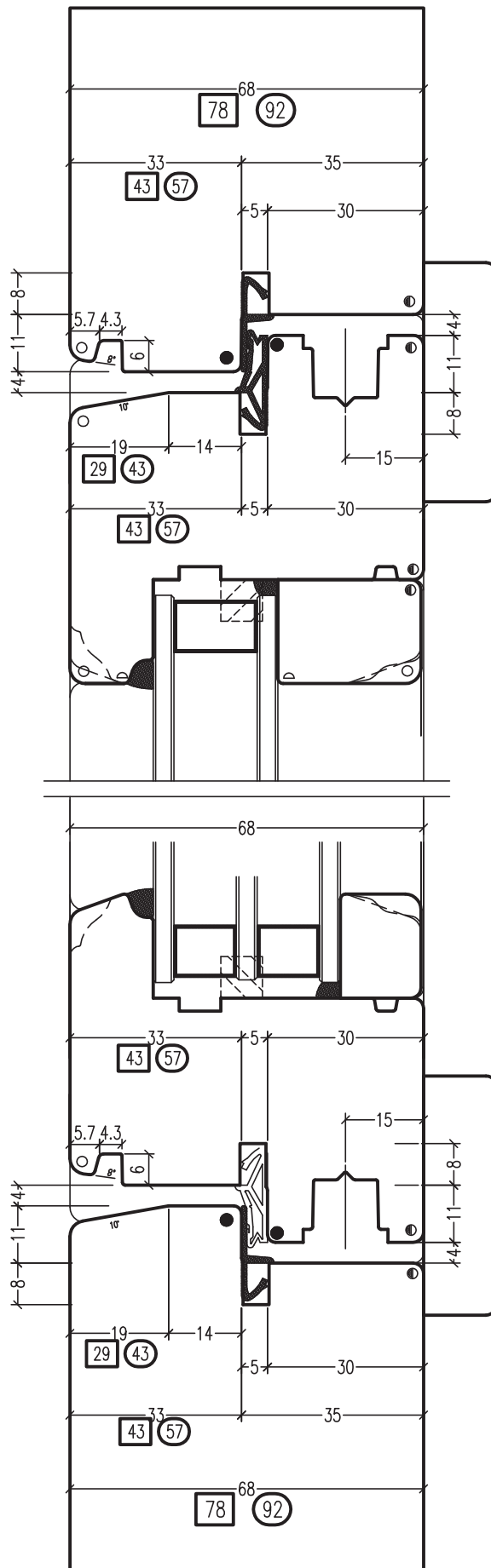
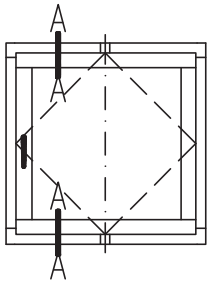
Sistema MAICO

L 161509031

KBZ: SW68
 SW88
 SW92



Pivotante vertical 175kg
 Marco: esp.: 68/78/92mm
 Sistema Maico

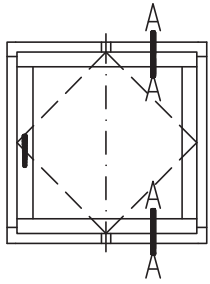


- ∅ R 1.0
- R 1.5
- R 2.0
- R 3.0

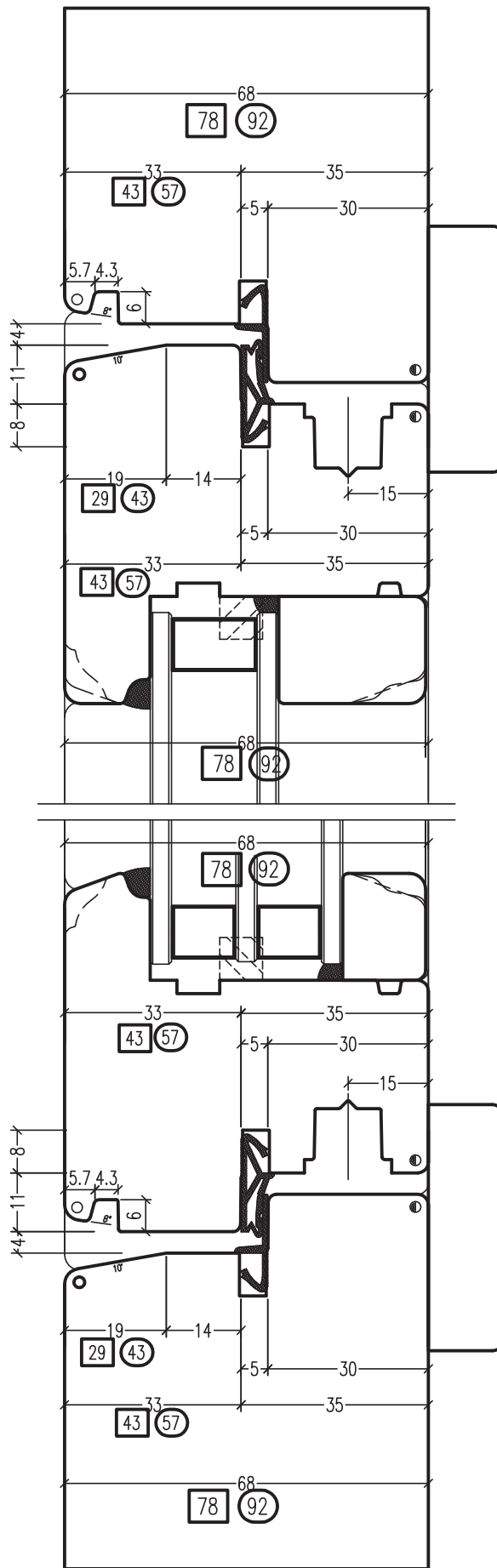
Pivotante vertical

L 161509031 PZ01

KBZ: SW68
 SW88
 SW92



Pivotante vertical 175kg
 Marco: esp.: 68/78/92mm
 Sistema Maico



- ⊂ R 1.0
- R 1.5
- R 2.0
- R 3.0

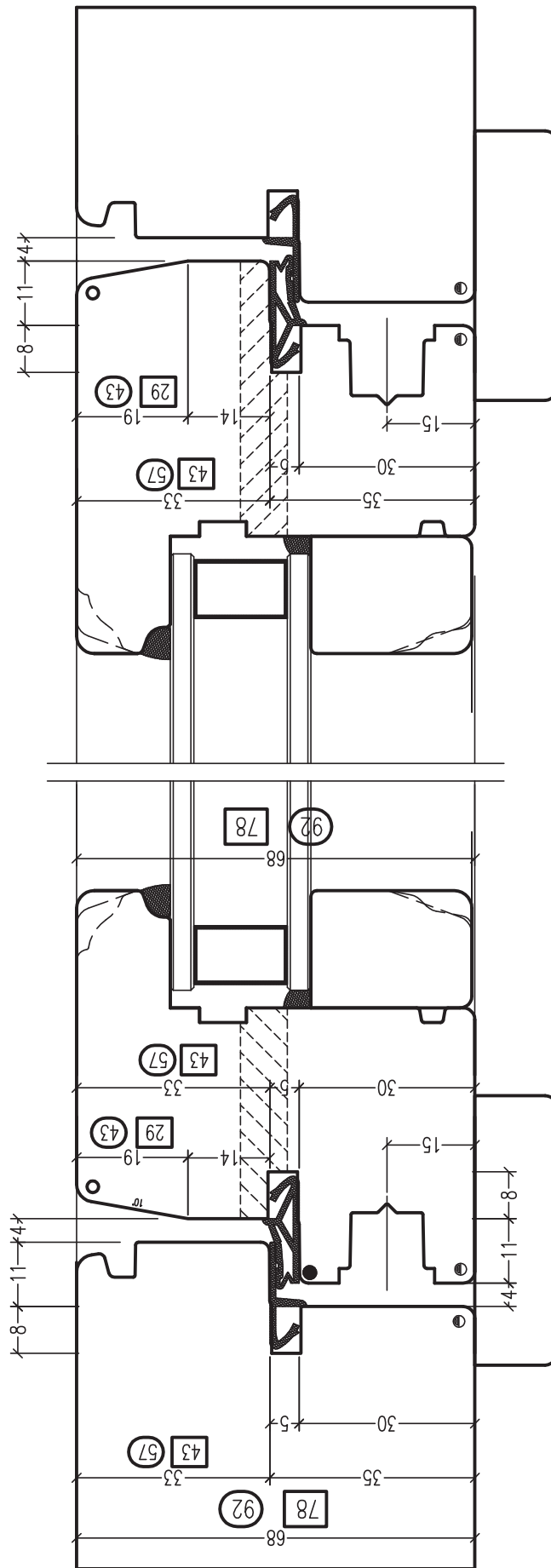
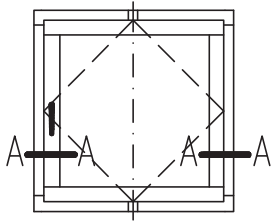
Pivotante vertical

L 161509031 PZ02

KBZ: SW68
 SW78
 SW92



Pivotante vertical 175kg
 Marco: esp.: 68/78/92mm
 Sistema Maico



- ∅ R 1.0
- R 1.5
- R 2.0
- R 3.0

Pivotante vertical

L 161509031 PZ03